

# At every Embassy Suites...



EMBASSY SUITES  
HOTELS®



## ENJOY ALL OF OUR SERVICES AND AMENITIES INCLUDING

- Spacious two-room suites for you to relax and spread out
- Complimentary cooked-to-order breakfast
- Lush open-air atriums
- Complimentary Manager's Reception\* where you can enjoy your favorite beverages and appetizers
- Precor® Fitness Centers open 24/7

*\*Subject to state and local laws. Must be of legal drinking age*



## ALSO ENJOY OUR BUSINESS SERVICES

- Complimentary Embassy BusinessLink™ Business Centers open 24/7
- High-speed Internet (wireless in the atrium)
- Meeting and Event space with all the right tools. Visit [embassysuites.com/groups](http://embassysuites.com/groups) to learn more.
- EmbassyDirect™ Registration kiosks to print your boarding pass from the lobby as well as check-in and out fast.

## TABLE OF CONTENTS

### 2 Embassy Suites Philadelphia-Valley Forge

## ICON KEY



DINING



GOLF



MEETING FACILITIES



WHIRLPOOL



WIRELESS



BUSINESS CENTER



HANDICAP ACCESSIBLE



SWIMMING POOL



RESORT



FITNESS CENTER



HIGH SPEED INTERNET



PETS ALLOWED



TENNIS



## Embassy Suites Philadelphia-Valley Forge

888 Chesterbrook Boulevard, Wayne, Pennsylvania, United States 19087

Tel: 1-610-647-6700, Fax: 1-610-889-9420

EMBASSY SUITES  
HOTELS®



Room for more.  
Embassy Suites gives you room to do more.

More  
of what matters.

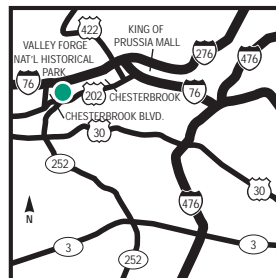


### OUR HOTEL

Welcome to the Embassy Suites Philadelphia - Valley Forge hotel in Philadelphia, Pennsylvania.

### HOW TO GET HERE

**FROM THE PENNSYLVANIA TURNPIKE AND POINTS NORTH** - Take exit 326, Valley Forge/King of Prussia. After going through the toll booth, take exit 328A, West Chester/202 South. Follow 202 South for approximately 3 miles to the Chesterbrook Blvd. Exit. At the top of the exit ramp, make a right, the hotel entrance is on the right. **FROM THE SCHULYKILL EXPRESSWAY (Route 76) AND CENTER CITY PHILADELPHIA** - Take 76 West to exit 328A, Valley Forge/West Chester/202 South. Follow 202 South for approximately 3 miles to Chesterbrook Blvd exit. At the top of the exit ramp, make a right, the hotel entrance is on the right.



### IN-HOTEL DINING

- E BAR
- Grille At Chesterbrook
- Cooked-to-Order Breakfast
- Manager's Reception

### LOCAL BUSINESSES

- IBM
- SAP America
- AMERISOURCEBERGEN
- Oracle
- De LagLanden
- [\[click to view more...\]](#)

### POINTS OF INTEREST

- American Helicopter Museum
- Brandywine Trail Wineries
- Brandywine Valley Museums & Attract
- Citizens Bank Park
- City Center
- Devon Horse Show Grounds
- [\[click to view more...\]](#)

### WHAT TO DO AND WHERE TO GO

Our Embassy Suites Philadelphia - Valley Forge hotel enjoys a suburban setting near the Chesterbrook Corporate Complex, which boasts one million square feet of office space, as well as being close to many top attractions in the Philadelphia area, such as the King of Prussia Mall. We offer a complimentary hotel shuttle within a five mile radius of the hotel, based on request and availability. So whether you're a city slicker or a nature lover, our hotel's idyllic Valley Forge setting near Philadelphia is sure to appeal to business and leisure guests alike.

MAKE A RESERVATION

FIND OUT MORE

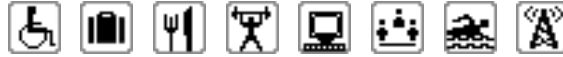


EMBASSY SUITES  
HOTELS®

## Embassy Suites Philadelphia-Valley Forge

888 Chesterbrook Boulevard, Wayne, Pennsylvania, United States 19087

Tel: 1-610-647-6700, Fax: 1-610-889-9420



*More* **2** Spacious Two-Room Suites Complimentary Cooked-To-Order Breakfast Evening Manager's Reception

### HOTEL SERVICES AND AMENITIES

#### FOR YOUR BUSINESS CONVENIENCE

Business Center	Complimentary Printing Service
Express Mail	Meeting Rooms
Modem	Photo Copying Service
Printer	

#### FOR YOUR COMFORT AND CONVENIENCE

Automated Teller (ATM)	Baggage Storage
Beverage Area, Complimentary	Breakfast Area, Complimentary
Coin Laundry	Elevators
Laundry/Valet Service	Local Area Transportation
Lounge	Luggage Hold
Multi-Lingual Staff	Room Service
Safety Deposit Box	

### IN-HOTEL DINING

#### E BAR

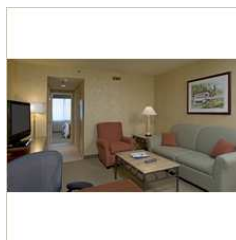
Relax and unwind, meet up with colleagues and friends at E BAR. EBAR is the perfect place to get a bite to eat or a drink in a sophisticated atmosphere that is unique to the area. An eclectic menu of comfortable favorites with a creative twist awaits you at E BAR. Whether you're looking for a lite bite or a casual meal, E BAR has something for everyone.

#### GRILLE AT CHESTERBROOK

A creative menu of continental cuisine with a twist along with seasonal specials, offers something for everyone. The Grille at Chesterbrook is open for breakfast, lunch and dinner daily and offers a special Sunset Dining menu from 5:00PM-7:00PM as well. For semi-private group dining, the restaurant offers the Alcove and for dining and meeting, the state-of-the-art Private Dining Room offers seating for up to 16 guests. Breakfast: Monday through Friday 6:30 AM - 9:30 AM, Saturday and Sunday 7:00 AM - 10:30 AM Lunch: 11:00 AM - 2:00 PM, seven days a week Dinner: 5:00 PM - 10:00 PM, seven days a week.

### SUITE DESCRIPTION

Two room suite features a separate living area with a double sleep sofa and 1 king size bed in the bedroom. In room wetbar features a coffeemaker, and refrigerator. Amenities include alarm clock radio, iron, ironing board, two telephones, voicemail, work desk, high speed internet access, hairdryer, and rainforest showerhead.



### POINTS OF INTEREST

(continued)

Independence Mall  
King of Prussia Mall  
Lincoln Financial Field  
Longwood Gardens  
National Constitution Center  
Outlets at Lancaster  
Philadelphia Premium Outlets  
QVC Studios  
Valley Forge National Park  
[\[click to view more...\]](#)

### LOCAL DINING

Winberie's Ameri Bistro  
Kildare's Irish Pub  
Creed's Seafood & Steaks

### MEETING SPACE

With our Complimentary 24/7 Embassy BusinessLink™ Business Center and ample meeting space, you can rest assured that the Embassy Suites Philadelphia - Valley Forge hotel is well-equipped to hold your business meetings. We cater for a range of group bookings, from family get-togethers to small board meetings. The key to our great reputation and success is the versatility of our spaces. Take a look at our capacity charts and floor plans to work out which combination layout fits your needs.