

At every Embassy Suites...



EMBASSY SUITES
HOTELS®



ENJOY ALL OF OUR SERVICES AND AMENITIES INCLUDING

- Spacious two-room suites for you to relax and spread out
- Complimentary cooked-to-order breakfast
- Lush open-air atriums
- Complimentary Manager's Reception* where you can enjoy your favorite beverages and appetizers
- Precor® Fitness Centers open 24/7

**Subject to state and local laws. Must be of legal drinking age*



ALSO ENJOY OUR BUSINESS SERVICES

- Complimentary Embassy BusinessLink™ Business Centers open 24/7
- High-speed Internet (wireless in the atrium)
- Meeting and Event space with all the right tools. Visit embassysuites.com/groups to learn more.
- EmbassyDirect™ Registration kiosks to print your boarding pass from the lobby as well as check-in and out fast.

TABLE OF CONTENTS

2 Embassy Suites Philadelphia-Valley Forge

ICON KEY



DINING



GOLF



MEETING FACILITIES



WHIRLPOOL



WIRELESS



BUSINESS CENTER



HANDICAP ACCESSIBLE



SWIMMING POOL



RESORT



FITNESS CENTER



HIGH SPEED INTERNET



PETS ALLOWED



TENNIS



Embassy Suites Philadelphia-Valley Forge

888 Chesterbrook Boulevard, Wayne, Pennsylvania, United States 19087

Tel: 1-610-647-6700, Fax: 1-610-889-9420

EMBASSY SUITES
HOTELS®



Room for more.
Embassy Suites gives you room to do more.

More
of what matters.

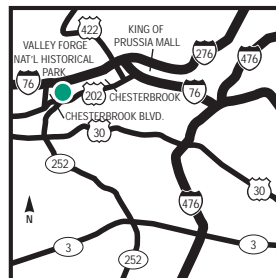


OUR HOTEL

Welcome to the Embassy Suites Philadelphia - Valley Forge hotel in Pennsylvania.

HOW TO GET HERE

FROM THE PENNSYLVANIA TURNPIKE AND POINTS NORTH - Take exit 326, Valley Forge/King of Prussia. After going through the toll booth, take exit 328A, West Chester/202 South. Follow 202 South for approximately 3 miles to the Chesterbrook Blvd. Exit. At the top of the exit ramp, make a right, the hotel entrance is on the right. **FROM THE SCHULYKILL EXPRESSWAY (Route 76) AND CENTER CITY PHILADELPHIA** - Take 76 West to exit 328A, Valley Forge/West Chester/202 South. Follow 202 South for approximately 3 miles to Chesterbrook Blvd exit. At the top of the exit ramp, make a right, the hotel entrance is on the right.



IN-HOTEL DINING

- Town & Country Grille
- Grille At Chesterbrook
- Cooked-to-Order Breakfast
- Manager's Reception

LOCAL BUSINESSES

- St. Gobain/Certainteed
- IBM
- Shire Pharma
- Astrazeneca
- Oracle

[\[click to view more...\]](#)

POINTS OF INTEREST

- American Helicopter Museum
- Brandywine Trail Wineries
- Brandywine Valley Museums & Attract
- Citizens Bank Park
- City Center
- Devon Horse Show Grounds

[\[click to view more...\]](#)

WHAT TO DO AND WHERE TO GO

Our Embassy Suites Philadelphia - Valley Forge hotel enjoys a suburban setting near the Chesterbrook Corporate Complex, which boasts one million square feet of office space, as well as being close to many top attractions in the Philadelphia area, such as the King of Prussia Mall. We offer a complimentary hotel shuttle within a five mile radius of the hotel, based on request and availability. So whether you're a city slicker or a nature lover, our hotel's idyllic Valley Forge setting near Philadelphia is sure to appeal to business and leisure guests alike.

MAKE A RESERVATION

FIND OUT MORE



EMBASSY SUITES
HOTELS®

Embassy Suites Philadelphia-Valley Forge

888 Chesterbrook Boulevard, Wayne, Pennsylvania, United States 19087

Tel: 1-610-647-6700, Fax: 1-610-889-9420



More **2** Spacious Two-Room Suites Complimentary Cooked-To-Order Breakfast Evening Manager's Reception

HOTEL SERVICES AND AMENITIES

FOR YOUR BUSINESS CONVENIENCE

Business Center	Complimentary Printing Service
Express Mail	Meeting Rooms
Modem	Photo Copying Service
Printer	

FOR YOUR COMFORT AND CONVENIENCE

Automated Teller (ATM)	Baggage Storage
Beverage Area, Complimentary	Breakfast Area, Complimentary
Coin Laundry	Elevators
Laundry/Valet Service	Local Area Transportation
Lounge	Luggage Hold
Multi-Lingual Staff	Room Service
Safety Deposit Box	

IN-HOTEL DINING

TOWN & COUNTRY GRILLE

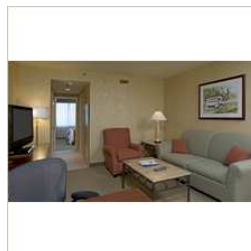
A large menu of continental dishes and good old American favorites is served up daily at the Town and Country Grille, our hotel restaurant. Open for lunch and dinner, its casual atmosphere is great for relaxing in after a hectic day in Philadelphia or Valley Forge.

GRILLE AT CHESTERBROOK

Enjoy American favorites in a casual, comfortable environment. Some suggestions from the menu include Quesadilla Sticks or Seafood Bisque. Salad selections include Crab, Mango, and Avocado Salad, 9th Street Market Salad. Entree selections include everything from our infamous Crab Melt to Black Skillet Pork Chop nestled in a Golden Apple Chutney. The Alcove is the perfect spot for groups up to 25 people or the Private Dining Room provides a state of the art environment for eating and meeting.

SUITE DESCRIPTION

Two room suite features a separate living area with a double sleep sofa and 1 king size bed in the bedroom. In room wetbar features a coffeemaker, and refrigerator. Amenities include alarm clock radio, iron, ironing board, two telephones, voicemail, work desk, high speed internet access, hairdryer, and rainforest showerhead.



POINTS OF INTEREST

(continued)

Independence Mall
King of Prussia Mall
Lincoln Financial Field
Longwood Gardens
National Constitution Center
Outlets at Lancaster
Philadelphia Premium Outlets
QVC Studios
Valley Forge National Park
[\[click to view more...\]](#)

LOCAL DINING

Winberie's Ameri Bistro
Kildare's Irish Pub
Creed's Seafood & Steaks

MEETING SPACE

With our Complimentary 24/7 Embassy BusinessLink™ Business Center and ample meeting space, you can rest assured that the Embassy Suites Philadelphia - Valley Forge hotel is well-equipped to hold your business meetings. We cater for a range of group bookings, from family get-togethers to small board meetings. The key to our great reputation and success is the versatility of our spaces. Take a look at our capacity charts and floor plans to work out which combination layout fits your needs.